



GAT MONTHLY MEMBERSHIP PROGRESS REPORT

Results as of: 6/30/2023

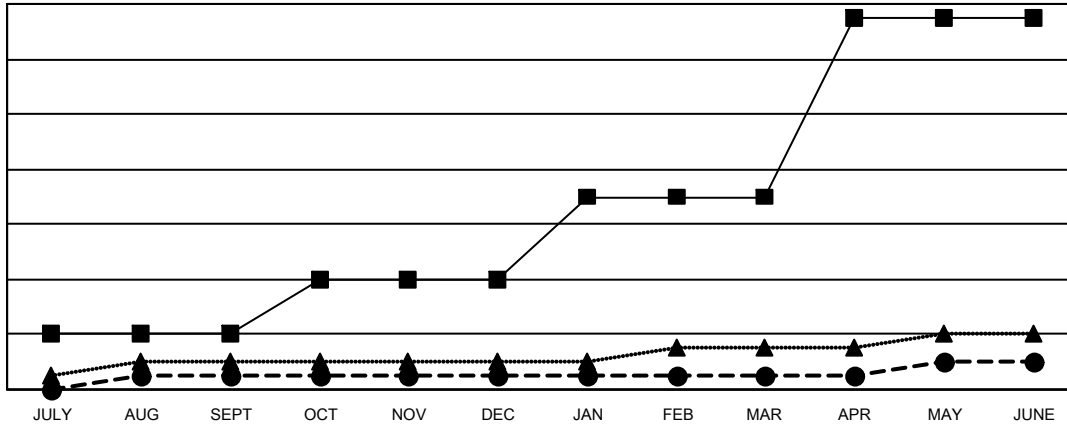
Multiple District 14

LOCATION: PENNSYLVANIA

Clubs			
RESULTS FOR 2022-2023			
QUARTER	NEW CLUB GOAL	NEW CLUBS	DROPPED CLUBS
JULY/AUG/SEPT	4	1	7
OCT/NOV/DEC	4	0	9
JAN/FEB/MAR	6	0	1
APR/MAY/JUNE	13	1	11

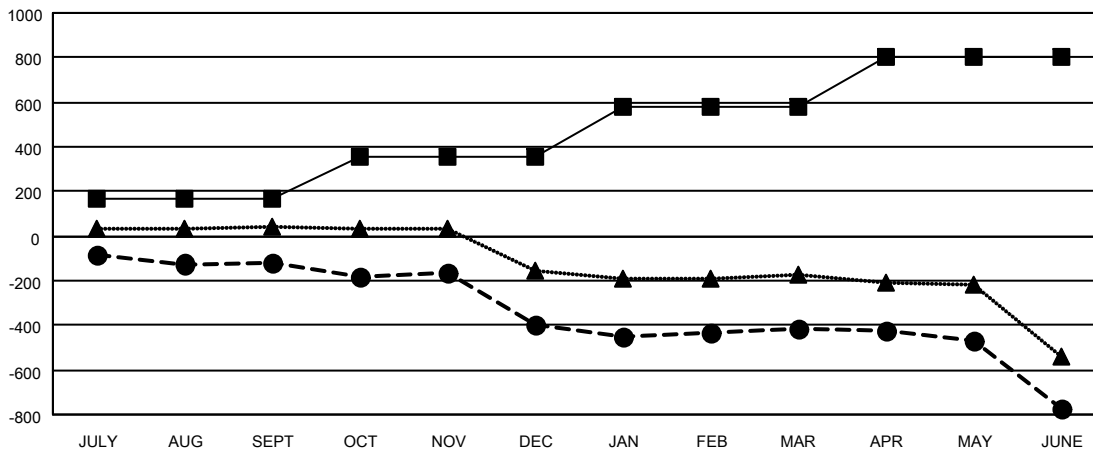
Members			
RESULTS FOR 2022-2023			
QUARTER	MEMBER GROWTH NET GOAL	MEMBER GROWTH ACTUAL	DROPPED MEMBERS ACTUAL (including transfers)
JULY/AUG/SEPT	164	323	405
OCT/NOV/DEC	194	290	521
JAN/FEB/MAR	224	382	356
APR/MAY/JUNE	219	385	704

GOALS AND ACTUAL NEW CLUBS CUMULATIVE



- CURRENT YEAR GOALS FOR NEW CLUBS
- CURRENT YEAR ACTUAL NEW CLUBS
- ▲- LAST YEAR ACTUAL NEW CLUBS

GOALS AND ACTUAL MEMBERS CUMULATIVE



- MEMBER GROWTH NET GOAL
- MEMBER GROWTH ACTUAL
- ▲- LAST YEAR MEMBERSHIP ACTUAL

DROPPED CLUBS: 28	
DROPPED MEMBERS	
DECEASED	368
CLUB CANCELLED	150
OTHER	1,467
TOTAL	1,985

360 CLUBS OF 641 ADDED 1 OR MORE NEW MEMBERS

[CLICK HERE FOR CUMULATIVE MEMBERSHIP DATA](#)

GENDER DISTRIBUTION	
MALE	10,907 (68.58%)
FEMALE	4,992 (31.39%)
NON BINARY	0 (0.00%)
PREFER NOT TO ANSWER	4 (0.03%)
TOTAL FAMILY UNIT MEMBERS	3,075
FAMILY MEMBERS PAYING HALF DUES	1,596